



Faculty

Our Culture

These slides are designed to be read, not presented.



Our culture enables us to develop innovative curriculum at a rapid pace, be responsive to student needs, and deliver high quality academic programs.

We are

- People first
- Proactive to find solutions
- Eager to try new things
- Willing to fail and start over
- Always working to make things better
- Accountable
- Open to feedback
- Anti-bullshit

We are NOT

- Ego first
- Waiting for solutions to find us
- Resistant to change
- Scared of messing up
- Complacent
- Quick to blame others
- Defensive and stubborn
- Tolerant of people or processes that stall our work



Yes!

It's true!

We walk our talk. And we seek people who possess the same values, work-ethic, drive, and discipline as we do.

If you want to be part of our team, keep reading.

1.

About the Institute

Let's start with what we do.



About



The Cummings Graduate Institute for Behavioral Health Studies is a DEAC accredited, nonprofit institution offering graduate and professional integrated behavioral health education through a virtual online campus.



The institute delivers post-graduate education in the field of integrated behavioral healthcare, including the Doctor of Behavioral Health (DBH) degree, certificate programs, and continuing education.



The distance learning DBH program was designed to address the unmet educational need to prepare behavioral healthcare providers to practice in primary care and other medical settings as part of an interdisciplinary team.



CGI Mission

Cummings Graduate Institute of Behavioral Health Studies delivers high quality, innovative, and affordable distance education to prepare healthcare professionals to improve well-being through integrated, locally responsive, and team-based care that is grounded in the Biodyne Model.



Vision

To improve the way
the world experiences healthcare.



DBH Program Mission

The Doctor of Behavioral Health (DBH) program equips doctoral-level practitioners to collaborate across disciplines in designing integrated care solutions that honor the unique values, needs, and aspirations of the individuals and populations they serve.

2.

About Our Culture

How we do it.

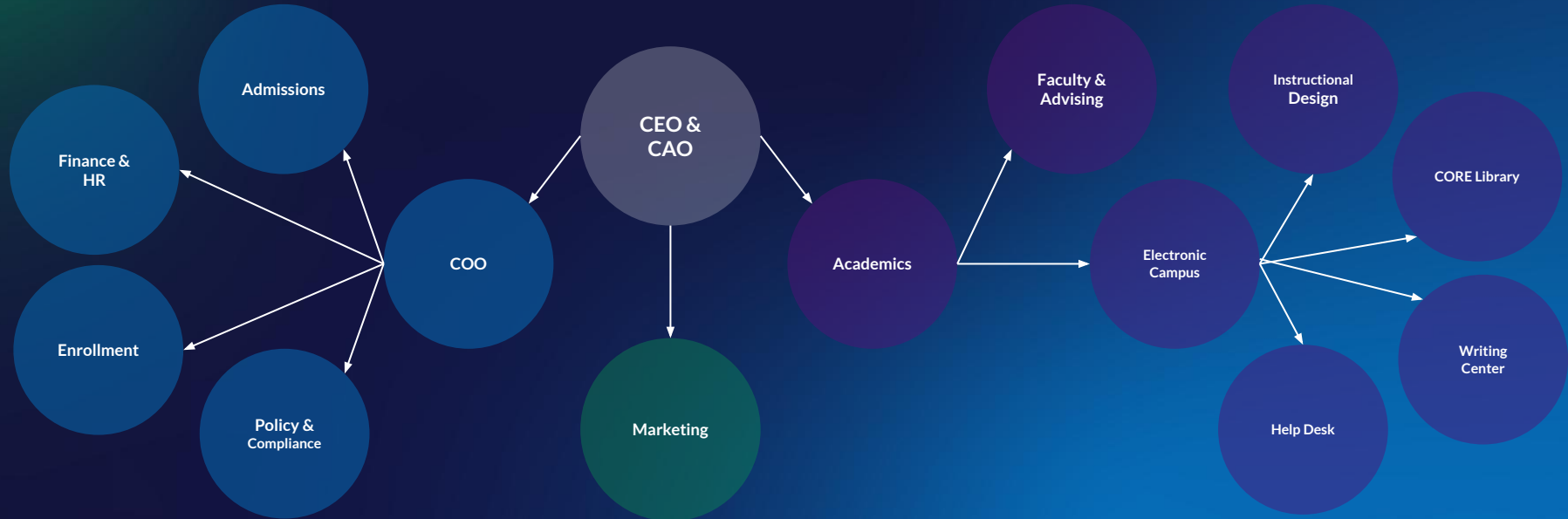
By the way, we refer to our institution as CGI.

CGI is a human centered organization
delivering accessible, high-quality,
online education to shape tomorrow's
healthcare leaders.



Organization Structure

Our institution structure is organized into functional teams.
Faculty are housed within the Academic team.





Faculty Expectations



CGI Faculty are the artists of our curriculum. Faculty bring our courses to life and interject their personality and subject matter expertise into the learning experience.



Communication is the backbone of our success. Prompt, articulate, and efficient communication is an expectation to our students, leadership, staff, and fellow colleagues.



As an online institution, regular and proactive engagement within courses and with students is critical. 100% of our students' interactions take place virtually. Faculty are only as visible as they make themselves.



Respecting deadlines, requests, and the time of others will cultivate a happy and healthy workplace both for faculty, students, and administration. If unable to meet a deadline or request, say something. Avoidance is not a solution..



Information and ideas are openly shared
and student issues are processed in the
student's best interest at a rapid pace.



This is only possible if everyone lives in a space of

Respect

Hold the utmost respect for all people from students, to colleagues, to faculty, to vendors, etc. Embrace diversity and welcome different views, opinions, and practices.

Trust

Have trust in all team members that they effectively and efficiently manage their responsibilities, work in the best interest of the institution, and prioritize their work accordingly.

Empowerment

Have the confidence and drive to find solutions to problems as they arise, utilize existing resources, think strategically, and ask for help when you need it.



And we never takes ourselves too seriously.



Have you seen our mascot? A Pigasus!

We have fun. We are bold. We make waves.

On the daily.

3.

About the Team

How to know if you're the right fit.



We borrowed some of this from Netflix.
CGI does not condone plagiarism.



We're a team, not a family.

We work together towards common goals. We can't get there without our full team.



We're like a pro sports team, not a kid's recreational team.

We train hard, take care of ourselves, and play fast with great focus.



Our goal is to hire, develop and cut smartly, so we have superstars in every position.

Fit is imperative. Without it misery is guaranteed. We don't do misery. We offer smooth exits for anyone who doesn't thrive in our environment.



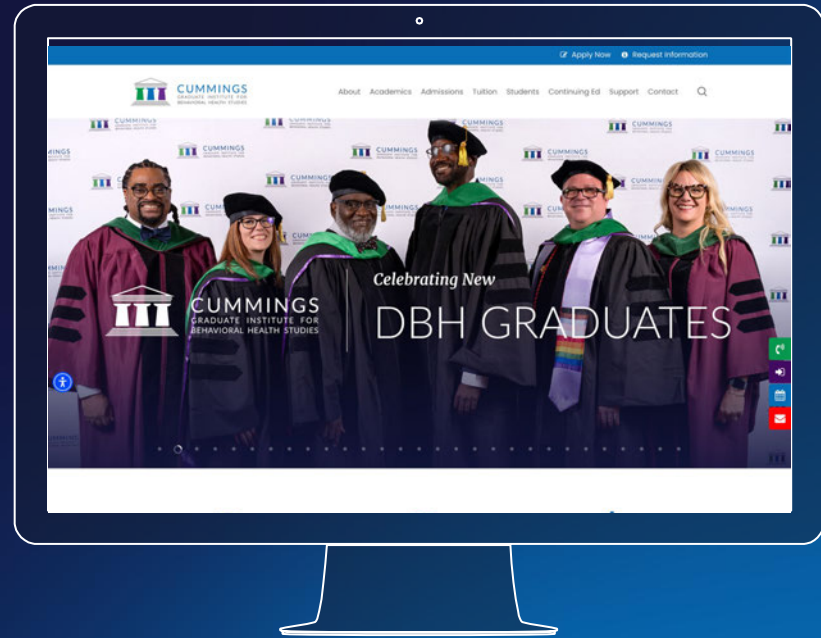
Are you more excited at the prospect of working at CGI now, than when you first opened this document?



If the answer is yes, then you just might be the right fit for our team, our mission, our institution, and most importantly, our students.

Visit our website and take
a look around, if you
haven't already done so.

cgi.edu





Jot down any questions you have and bring the list with you to the interview.

Remember, this is your chance to interview us, to make sure we are the right fit for you, your life, and your goals.



And on interview day,
as cliché as it sounds, **be yourself.**

We want to meet the most authentic you!